

Chromeo™ 642 Biotin

Catalog No: 15312, 16312

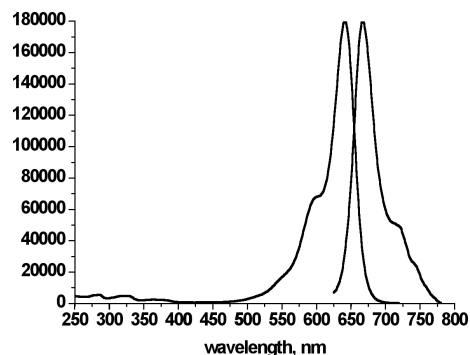
Chemical Properties:

Contents: 1 mg (Cat # 15312) or 5 mg (Cat # 16312) of lyophilized Chromeo™ 642 conjugated to Biotin-(PEO)₃-amine.

Net formula: C₅₁H₇₃N₆O₈PS; MW: 961.21

Reagent color: blue solid

Soluble in DMF and methanol.



Spectrum of Chromeo 642-Biotin in PBS

Fluorescent Properties:

Chromeo 642 shows similar fluorescent properties as the red fluorescent Cy5 dye.

Filters designed for Cy5 can be used with Chromeo 642 and its conjugates.

Chromeo 642 exhibits a large tolerance to pH and an unmatched photostability.

This provides more time for image capture.

Excitation Wavelength: 642 nm

Emission Wavelength: 660 nm

Quality Control:

The Dye has been quality tested by spectro-photometrical evaluation and by measuring binding properties on streptavidin-coated plates..

Storage and Guarantee:

To ensure stability, the lyophilized dye biotin conjugate should be stored at 4°C in the dark. This product is guaranteed for 6 months from the date of arrival.

